

Voltage monitoring relay

3-phase, 45mm width, snap-on-version to DIN-Rail

EUW 3



Performance data...

- Monitoring of 3 N ~-mains
- Under- and overvoltage monitoring of each single phase
- Thresholds individually adjustable approx. 3 x 50 ... 460V ~ 50/60 Hz
- Phase fail monitoring, rotation direction supervision
- Switch on and switch off delay individually adjustable 0,2 ... 10 sec
- LED-indication of each single fault
- Relay contacts as potentialfree double change-over version
- Potential separation of all circuits 4 kV

The voltage monitor for control systems

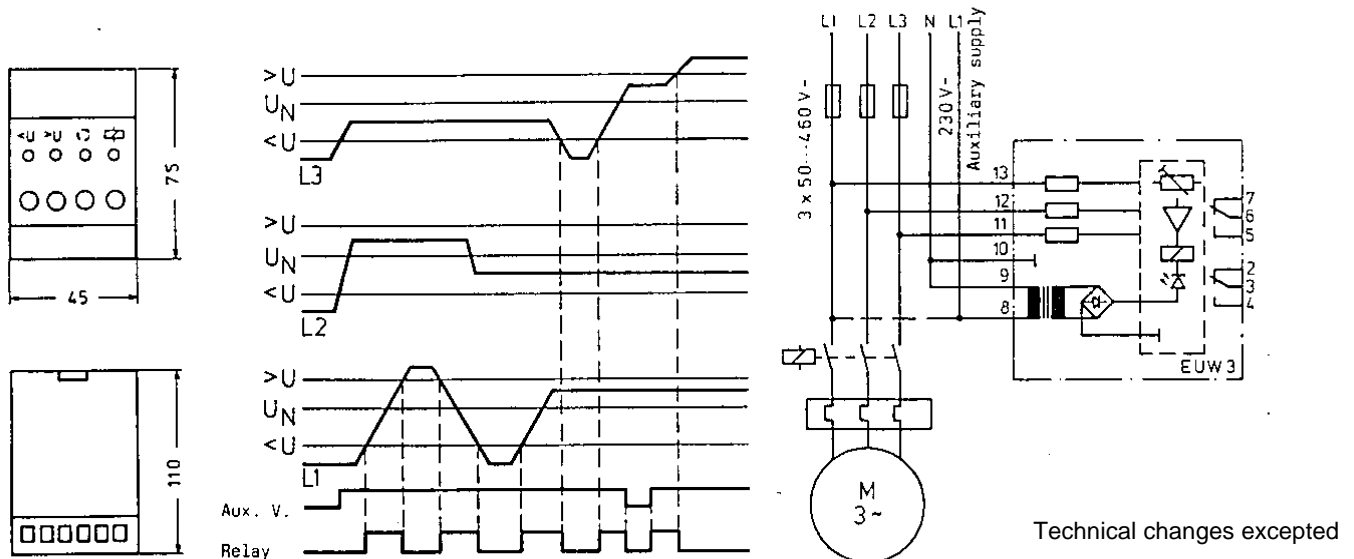
Technical description:

The EUW 3 monitors under- and overvoltage of 3-phase mains. Both thresholds can be adjusted separately from each other (operation adjustment 3 x 340/440V). Here, overlapping of the ranges must be avoided. Each single phase is monitored, so that not only the average value, but the real asymmetric or even phase fail can be recognized. Also, the rotation direction (phase following) and neutral wire interruption are monitored.

Each fault is indicated by the corresponding red LED, which lights up. The output relay simultaneously takes over a positive status (green LED lights up) and dissolves in case of faults or failure of the auxiliary supply. In order to avoid flashing during the switching procedures, each threshold is performed by a middle hysteresis of approx. 5 %. Furthermore, the switch on and switch off delay are individually adjustable between 0,2 ... 10 sec. Therefore, short mains shut downs oder asymmetrics can efficiently be suppressed during the switch on procedures.

Technical data:

- | | |
|-----------------------------|--------------------------------------|
| ▪ Auxiliary supply voltage | 230V +10% -15% 50/60 Hz |
| ▪ Monitoring voltage | approx. 3 x 50 ... 460V ~ adjustable |
| ▪ Power consumption | approx. 1 VA |
| ▪ Monitoring current | max. 0,5 mA for each phase |
| ▪ Threshold of hysteresis | approx. 5 % |
| ▪ Switching point tolerance | approx. 3 % |
| ▪ Switch on delay | approx. 0,2 ... 10 sec. adjustable |
| ▪ Load of relay contacts | 24v AC/DC or 250V AC 4A |
| ▪ Ambient temperature | -20°C ... +60°C without condensation |
| ▪ Rel. humidity | 75 % mean (Gr. F DIN 40040) |
| ▪ | |
| ▪ Weight | approx. 0,3 kg |



Technical changes excepted

EES Elektra Elektronik GmbH & Co Störcontroller KG

Hummelbühl 7-9 · D-71522 Backnang/Germany · P.O.Box 12 40 · D-71502 Backnang
 Phone: ++49.7191/182-0 · Telefax: ++49.7191/182-200 · e-Mail: info@ees-online.de
 Internet: www.ees-online.de